



familytree
UNIVERSITY



38

FAMILYSEARCH
SEARCH TIPS

Overview

A FREE WEBSITE by a nonprofit arm of the Church of Jesus Christ of Latter-day Saints (the Mormon church), FamilySearch.org has a large, growing collection of records, books, photos and family trees. These include more than 1,500 historical record collections from around the world, more than 3.5 billion names in searchable databases, and more than 177,000 digitized books. You can search many of these records by name and other details, thanks to FamilySearch's volunteer indexing program; but some are still awaiting indexing and must be browsed. This genealogical bounty is accessible from tabs at the top of FamilySearch.org.

Search strategies

Use these strategies for success in finding your ancestors on FamilySearch.org.

- **SEARCH FOR RECORDS.** Under the Search tab, click Records for a form to search for a person in indexed records. You can enter the first and last names; information about one or more life events (birth, marriage, residence, death or "any," which could be, for example, an immigration year);

FAMILYSEARCH.ORG SEARCH FORM

The screenshot shows the 'Search Historical Records' form on FamilySearch.org. At the top, there are navigation tabs: RECORDS (selected), GENEALOGIES, CATALOG, BOOKS, and WIKI. The main heading is 'Search Historical Records' with the subtext 'Search for a deceased ancestor in historical records to uncover vital information from their life.'

The form is divided into several sections:

- Deceased Ancestor's Name:** Contains two input fields for 'First Names' and 'Last Names', each with a small square checkbox to its right.
- Search with a life event:** Features radio buttons for 'Birth', 'Marriage', 'Residence', 'Death', and 'Any'. Below this are 'Birthplace' and 'Birth Year (Range)' fields. The 'Birth Year (Range)' field has 'From' and 'To' sub-fields.
- Search with a relationship:** Includes radio buttons for 'Spouse', 'Parents', and 'Other Person'.
- Restrict records by:** Has radio buttons for 'Location', 'Type', 'Batch Number', and 'Film Number'. Below this are 'Country' and 'State or Province' input fields.
- At the bottom, there is a checkbox for 'Match all terms exactly' and two buttons: 'Search' and 'Reset'.

Orange callout lines point to specific elements:

- One points to the checkbox next to the 'Last Names' field.
- Another points to the 'Any' radio button.
- A third points to the 'From' field in the 'Birth Year (Range)' section.
- A fourth points to the 'Parents' radio button.
- A fifth points to the 'Country' input field.
- A sixth points to the 'Search' button.

MEMBERSHIP OPTIONS

Level	Benefits	Cost
Public Member	View records, including many restricted ones; create, view and edit family trees	free
LDS Member	The above, plus at-home access to records otherwise restricted for viewing in FamilySearch Centers	free

and names of the person's parents, spouse or another person who might appear with him in records. You also can restrict your results to those from a certain country or of a certain type (such as census or military records).

On the search results page, look to the left for fields where you can adjust your search terms. Below that, you can use filters to narrow your search by collection (which lets you narrow results to a record category and then a database), a birthplace in the record, a birth year in the record, and more.

A camera icon in the far right column for a match indicates a digital image you can download to your computer and/or add to your tree; no camera icon means it's an index-only record. In a few collections, due to the wishes of record custodians, record images are available only to those with an LDS account or to those using the website at a FamilySearch Center (also called a Family History Center). Some collections, such as the 1910 census, link to a record image on a subscription site. You can view these with a subscription or by visiting a FamilySearch Center.

- **BROWSE RECORDS.** Searching a specific record collection covering a place and time that fits your family helps you focus

Checking the box next to a search term looks for records with information exactly matching what you typed in that field.

Click a life event to get boxes to enter place and date details.

If you don't want to search on a date range, just enter a year in either the From or To box.

Click a relationship to look for records containing that family member's name. If you're looking for all the children of a couple, try leaving the Deceased Ancestor's Name fields blank and clicking Parents to enter a couple's names.

Enter a country and optionally, a state or province, to limit your search to records from that place. Or click Type to select the types of records you want (birth and baptism, military, probate, etc.).

FAMILYSEARCH.ORG SEARCH RESULTS

Records **Collections**

Search Results from Historical Records
1-20 of 60 results for Name: **gerhard depenbrock**, Event: **Residence**, Place: **ohio**

Number of results to show:

Preview	Name	Events	Relationships	Details	Image
▶	Gerhard Depenbrock Father Ohio, Deaths, 1908-1953	birth: Germany	child: Catherine Hueneina...	[icon]	[camera]
▶	Gary L Rapenbrock [Gary L Apenbrock, Gary L Papenbrock, L Gary] United States Public Records, 1970-2009	birth: 11 October 1965 residence: 3 November 2004 Dayton, Ohio, United States		[icon]	[camera]
▶	Edward G Depenbrock Father United States Census, 1940	birth: 1886 Ohio residence: 1940 Botkins Village, Dinsmore Township, Shelby, Ohio, United States	other: Mary M Alexander	[icon]	[camera]
▶	Edward G Depenbrock Head United States Census, 1920	birth: 1887 Ohio residence: 1920 Miami, Greene, Ohio, United States		[icon]	[camera]
▶	Eric G Depenbrock	birth: September 1968		[icon]	[no camera]

Filters let you view results by collection, birthplace, etc. Click Refine your search to edit your search terms.

Click the arrow in a record's Preview column to quickly see transcribed information from that record.

Click the person's name or the icon in the Details column to view full transcribed information from the record. You'll also get an automatically generated source citation and a link to view the document image (if available).

Click the camera to view the digitized document in FamilySearch.org's image viewer.

No camera icon in the Image column means this match is from an index-only collection.

on the most relevant matches. On FamilySearch, this also lets you access images of records that aren't yet part of the site's searchable indexes. Under the Search tab, click Records, then Browse All Published Collections to see a list of all records, both indexed and unindexed, arranged by place. On the left, you can filter the list by name (enter any word in the collection title), place, date, record type and image availability. Click a title to search or browse that collection.

■ **FIND RELATIVES IN THE FAMILY TREE.** The FamilySearch Family Tree has a lofty goal: to create a family tree of the whole human race (at least since recordkeeping began). Other websites have large collections of family trees that often duplicate each other, errors and all. In an effort to increase accuracy and decrease duplication, FamilySearch has designed its tree with one profile per ancestral person, which anyone can edit. Unlike the rest of FamilySearch.org, you must register to use the Family Tree, but it's still free.

To search the tree, click Find under the Family Tree tab. You can enter a name; gender; dates of birth, christening marriage, death and/or burial; and family members' names.

Adding your relatives to the Family Tree can help you find their records: FamilySearch automatically searches its record collections for matches to people in the tree. Click the Family Tree tab to start your tree and either manually enter

the information, or use genealogy software that can reconcile data between the family file on your computer and Family Tree. FamilySearch-approved Windows programs include Ancestral Quest, Legacy Family Tree and RootsMagic. To avoid duplicating people already in the tree, FamilySearch checks if it already has a profile for people you're adding.

In the tree, record hints appear on the right side of the Personal Details page and as brown icons in Descendancy view. You can review and verify possible matches, and attach the records to personal profiles.

To search the Family Tree's photos, stories and documents for any term (such as a name, place or other topic), look under the Memories tab and select Find. Click the Memories tab on the home page to see at a glance all the photos, stories, documents, audio and albums you or someone else has submitted and linked to your relatives.

■ **SEARCH USER-SUBMITTED GENEALOGIES.** Under Search>Genealogies, you can search the old Ancestral File and Pedigree Resource File, two collections of family trees that researchers submitted over many years. Pedigree Resource File includes notes and sources, but Ancestral File doesn't. Neither collection shows the submitters' names. It's worth mining these family trees for clues, but always try to verify the information with original sources.

POWER USER TIPS

- **SEARCH WITH WILDCARDS.** The FamilySearch.org records search lets you use the ? wildcard in a surname to represent one letter, and the * wildcard to represent multiple letters.
- **USE EXACT CAREFULLY.** If the death date is marked as exact, for example, your results will contain only records that have a death date—and most of your ancestor’s records were created while he was alive.
- **LOOK FOR INDEXES IN IMAGED VOLUMES.** Browsing an unindexed collection? Digitized volumes often contain handwritten or typed name indexes. Look for a volume with “index” in the title, and check the beginning and end of individual volumes.
- **START SEARCHING WITH A PLACE.** To focus your search on record collections related to a place, look under the Search tab, click Records and select a region on the world map. For example, click on the United States and select New York from the popup menu. You’ll see stats on the site’s New York records and a link to “Start researching in New York.” That link takes you to the New York research page, where you can search indexed New York records. Scroll down to see record collections that haven’t been indexed yet; click a title to browse.
- **SEARCH FROM A FAMILY TREE PROFILE.** FamilySearch.org can help you find records faster by filling in the search form with details on someone in the Family Tree. In the person’s Personal Details view, look under the Research Help section of the right column and click Search Records. The site searches on the name, birth year plus or minus two years, birthplace, parents and spouse. You can attach a matching record to everyone it pertains to in the tree.
- **GET RESEARCH ADVICE.** The FamilySearch Wiki, which you can access under the Search tab, offers research advice, such as how to access records for a particular state or country or how to find military records.
- **SEE RECENTLY UPDATED COLLECTIONS.** Because of FamilySearch’s fast digitizing pace, it pays to regularly check for new records from the places your family lived. Under the Search tab, click Records, then click Browse All Published Collections to see a list of all records. Click the Last Updated column heading on the right to move recently updated collections to the top.

■ FIND MICROFILMED RECORDS.

It’ll take years to digitize and index the massive holdings of microfilmed records at FamilySearch’s Family History Library in Salt Lake City. If you can’t visit the library, you can access most of its microfilm and microfiche for a small fee through FamilySearch Centers around the world.

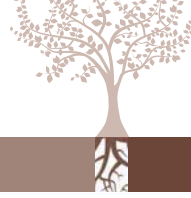
Under Search>Catalog, run a Places search to find books and microfilmed records from that place. Search on all the towns, counties, states and countries where your ancestors lived. Run a Surnames search to find family histories. Note that this search covers only surnames mentioned most often in a book, not every name. You can search on multiple terms, such as a surname and a place, but you’ll probably have better luck by entering these terms in the Keywords box. If a book or record collection is available online, the catalog entry links to the online version. Otherwise, click to order films for viewing at a local FamilySearch Center. Printed books don’t circulate to FamilySearch Centers; see if a library near you has a copy.

■ **SEARCH DIGITIZED BOOKS.** Under the Search tab, click Books to search more than 177,000 digitized books, including family and county histories, transcribed records and more. Try searching on a name using the “Any is (exact)” option. To view a match, you must download the entire book (a PDF file), then use your PDF reader to search for the term in the book. Some books can be viewed only in a FamilySearch Center. ■

» Rick Crume

HELPFUL LINKS

- **Blog** <www.familysearch.org/blog/en>
- **Browse All Published Collections** <www.familysearch.org/search/collection/list>
- **Contact** <www.familysearch.org/ask/help>
- **FamilySearch Centers** <www.familysearch.org/locations>
- **FamilySearch Indexing** <www.familysearch.org/indexing>
- **Help** <www.familysearch.org/ask>
- **Search Digitized Books** <www.books.familysearch.org>
- **Search the Family Tree** <www.familysearch.org/tree/#view=search>
- **Search the FamilySearch Catalog** <www.familysearch.org/catalog-search>
- **Search historical records** <www.familysearch.org/search>
- **Search photos and stories** <www.familysearch.org/photos/find>
- **Site Map** <www.familysearch.org/site-map>
- **Your account** <www.familysearch.org/profile/account>



TUTORIAL

Finding Relatives in FamilySearch.org's Unindexed Records

1

Browse All Published Collections

Browse by Location

- Africa
- Asia and Middle East
- Australia and New Zealand
- Canada
- Caribbean, Central and South America
- Continental Europe
- Mexico
- Pacific Islands
- United Kingdom and Ireland
- United States

Historical Record Collections		22 collections
Title -	Records	Last Updated
Maine, Androscoggin County, Probate Estate Files, 1854-1918	Browse Images	09 Nov 2012
Maine, Aroostook County Deed Books, 1865-1900	Browse Images	15 Sep 2011
Maine, Aroostook County, Probate Records, 1837-2007	Browse Images	12 Oct 2012

2

3

Maine, Aroostook County, Probate Records, 1837-2007

Description

Indexes, books, dockets and estate files located in the probate office in Houlton, Maine.

[Learn more >](#)

View Images in this Collection

Browse through 129,686 images

Source Information

"Maine, Aroostook County, Probate Records, 1837-2007." Images. *FamilySearch*. <https://familysearch.org> : accessed 2014.

FamilySearch.org has millions of digitized birth, marriage, death, census and probate records from around the world. Largely thanks to FamilySearch Indexing <familysearch.org/indexing> volunteers, more than 3.5 billion names in those records are searchable.

But if you only search the indexed collections on FamilySearch.org, you'll miss out on valuable genealogy information. In order to make digitized records available as soon as possible, FamilySearch puts unindexed record collections online for browsing. You could wait until those collections are indexed to find your ancestors' records in them—or follow these steps to find your ancestors' records now:

1 First, find collections you want to explore. Go to FamilySearch.org and click on Search. That takes you to the Records Search form, which covers only collections indexed by name. To see a list of all the collections, scroll down and click on Browse All Published Collections (or go to <www.familysearch.org/search/collection/list>).

2 The record collections are listed alphabetically by location. A camera icon indicates that the collection includes images of the original records. The Records column shows the number of names in indexed collections. If a collection is unindexed, the column says Browse Images. Options on the left let you filter collections by name, place, date, record type and image availability, to find records covering places where your ancestors lived.

3 Learn about the place and time period the collection covers. For example, select "Maine, Aroostook County, Probate Records, 1837-2007." The resulting page displays a description of the collection and source information. Click on Learn More for details about the collection content in the FamilySearch Wiki <wiki.familysearch.org>, which states, "This collection is being published as images become available." Thus more records will be added in the future.

4 Look for a digitized index to the collection you want to use. Some

Record Type

- Estate files
- Index books
- Probate Court docket
- Probate index
- Probate index cards

unindexed collections are in alphabetical order. To find Samuel Beveridge Harris, click the link for the file range "Harrington, Romeo Adelbert-Hart, Henry George." It has 3,067 images. Type a number into the Image box at the top of the viewer and hit Enter or click Go. Browse until you find the record you need. Cards for Samuel Beveridge Harris are on images 1,483 to 1,484.

Other unindexed collections, such as land and probate records, often include

Year, volume or case number and name

- 1840-1900, Vol. 2, M-Y
- 1900-1910, Vol. 3, A-K
- 1900-1910, Vol. 3, K-Y
- 1910-1925, Vol. 4, A-C
- 1910-1925, Vol. 4, C-F
- 1910-1925, Vol. 5, G-L
- 1910-1925, Vol. 5, L-Mc
- 1910-1925, Vol. 6, N-S
- 1910-1925, Vol. 6, S-Z

5

digitized images of the printed indexes. Start with those indexes to determine the volume and page numbers for the records you need. For example, click on the link to browse “Maine, Aroostook County, Probate Records, 1837-2007,” and you’ll find that it consists of five record types. Click on each one to find out what’s included. The Index Books cover 1840 to 1925, the Probate Index covers 1840 to 1950 and the Probate Index Cards cover 1930 to 2006.

5 We’re looking for probate records for George L. Pennington, who died in 1911. Click on Index Books. From the available volumes, select “1910-1925, Vol. 6, N-S,” for last names beginning with letters in that range.

6 That index volume consists of 303 images. To find a name, enter a number in the Image box and hit Enter or click Go. Browse until you find the name you need. The files for George L. Pennington’s estate are listed on image 84, his wife Sarah’s are on image 85 and their daughter Annie’s are on image 83. The docket, the first item listed on George’s index page, cites volume 8, page 73. The Probate Index cites the same volume and page number.

7 Now we want to find the image of the actual record on volume 8, page 73, in the estate files. To return to the list of files in this collection, click on “Maine, Aroostook County, ...robate Records, 1837-2007” near the top of the screen. Select Estate Files. Then click on the link for “1911, Vol. 8, no. 65, Getchell, Wallace I.-no. 79, Currie, Jonathan,” which should include volume 8, number 73 (which is actually a file number, not a page number).

County, ...robate Records, 1837-2007 > Index books > 1910-1925, Vol. 6, N-S > Image 84 of 303

ESTATE.			Vol.	Page.
Pennington George L	Docket James L Pennington Sarah A Pennington		8	73
Bridgewater	Admrs			
Petition For Administration			66	248
Bond			66	420
Letter Of Administration			66	571
Affidavit Of Notice Of Appointment			67	156
Warrant and Inventory			71	97
Petition For Allowance To Widow			37	117
Order Of Allowance			37	301
First and Final Account			72	92
Petition To Determine Inheritance Tax			52	438
Petition For Distribution			45	174
Petition For Conveyance According To Contract			44	319
Bond			61	192
License			62	443
Certificate of Sale			62	465

6

Year, volume or case number and name

- 1911, Vol. 8, no. 65, Getchell, Wallace I. - no. 79, Currie, Jonathan
- 1911, Vol. 8, no. 7, Kelso, John G. - no. 27, Olson, Johanna

7

8 Browsing the 478 images in that set of records, you’ll find George L. Pennington’s 49-page estate file on images 242 to 290. It’s full of interesting information, such as the estate’s value (\$48,500), the names of his heirs, their places of residence and how much each one inherited.

Click and drag to move the record side of the image viewer to zoom in and out. Hover your mouse cursor over the viewer tools to see pop-up descriptions of them. You can print one page at a time or save it as a JPG file on your

Maine, Aroostook County, ...robate Records, 1837-2007 > Estate files > 1911, Vol. 8, no. 65, Get... of 478

No. 15.

STATE OF MAINE.

TO THE HONORABLE, THE JUDGE OF THE PROBATE COURT IN AND FOR THE COUNTY OF AROOSTOOK,

RESPECTFULLY REPRESENTS *James L. Pennington and Sarah A. Pennington*

of _____

that there remains in the hands of said *petitioners*

of _____ in said County of Aroostook *administrators*

of the estate of *George L. Pennington*

Bridgewater in said County, deceased, on the settlement of _____

account made at a Probate Court held at *Northton*, Caribou, in and for said County, on the third Tuesday of *September* A. D. 1911, property not necessary for the payment of debts and expenses of administration, not specifically bequeathed, to the amount of _____ dollars

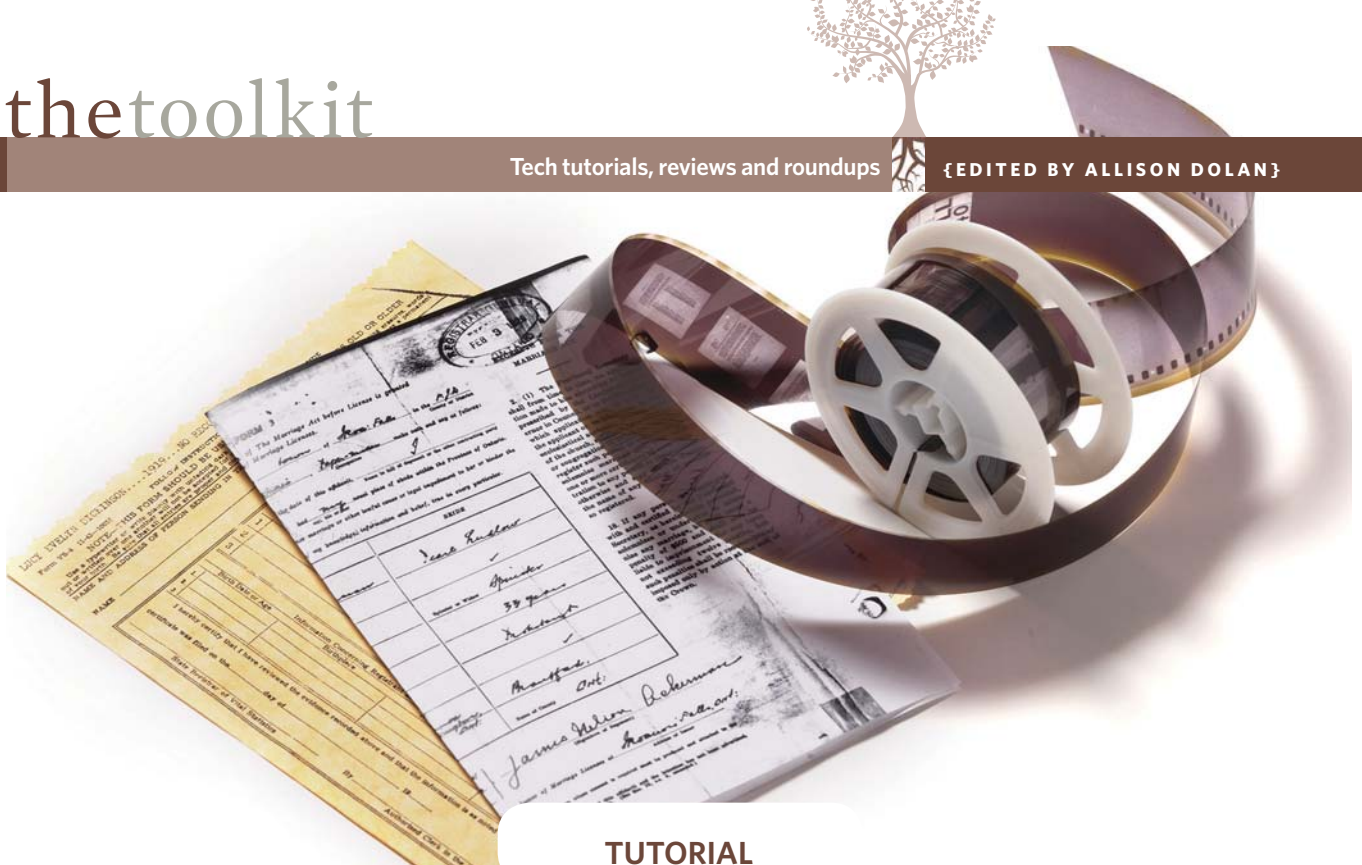
which sum remains to be distributed among the persons whose names, residences and relationship to said deceased are believed by your petitioner to be as follows:

NAME	RESIDENCE	RELATIONSHIP
<i>Julia M. Laird</i>	<i>Thyndon Me.</i>	<i>daughter</i>
<i>James L. Pennington</i>	<i>Caribou Me.</i>	<i>son</i>
<i>James Pennington</i>	<i>Houlton Me.</i>	<i>daughter</i>
<i>George O. Pennington</i>	<i>Houlton Me.</i>	<i>grand-son</i>
<i>Charles P. Yurka</i>	<i>Houlton Me.</i>	<i>grand-son</i>
<i>William A. Yurka</i>	<i>Houlton Me.</i>	<i>grand-daughter</i>
<i>Ruth N. Yurka</i>	<i>Houlton Me.</i>	<i>grand-daughter</i>
<i>George W. Yurka</i>	<i>Houlton Me.</i>	<i>grand-son</i>

8

computer. Click on Show Citation in the lower left hand corner to see how to cite this source in your genealogy software or research notes. ■

» Rick Crume



TUTORIAL

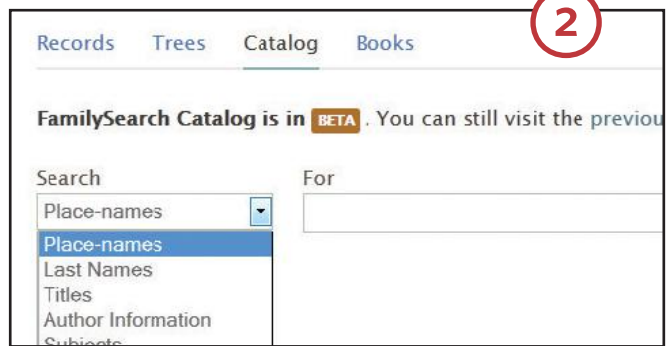
Ordering FamilySearch Microfilms Online

INSTEAD OF WRITING to courthouses and driving to libraries with large genealogy collections, there's an easier, cheaper way to access many genealogical records and books. The Church of Jesus Christ of Latter-day Saints' (LDS) genealogy arm, FamilySearch, has microfilmed millions of records and books from all over the globe. You can view the microfilms at LDS' Family History Library (FHL) in Salt Lake City, or rent them through 4,600 branch FamilySearch Centers around the world. Follow these steps place a microfilm rental order from home.

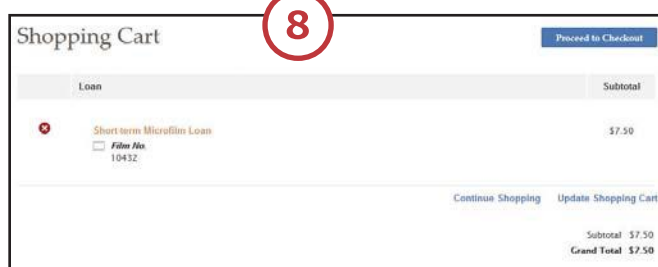
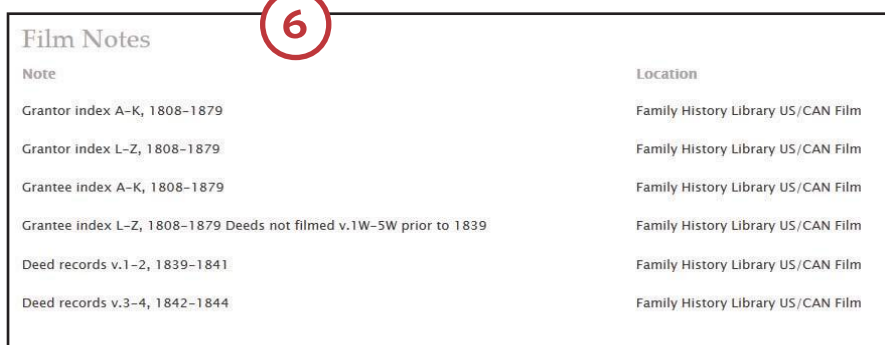
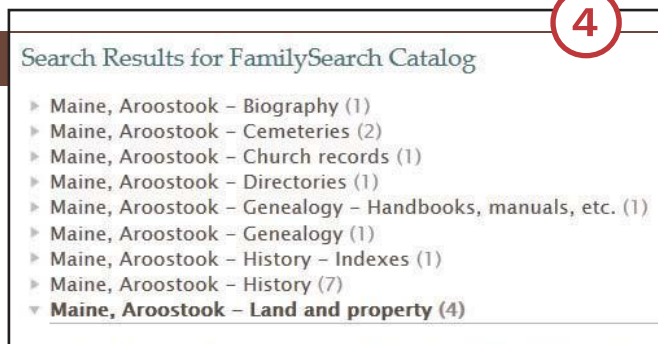
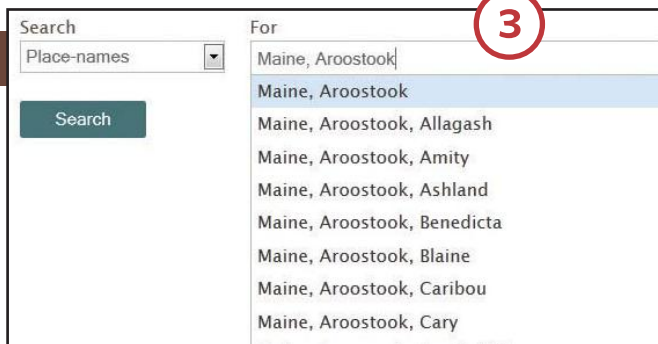
1 Click on Sign In in the top right corner of the FamilySearch.org home page <www.familysearch.org>. If you don't already have a free FamilySearch Account, you'll need to create one. When you register, you'll select a



default FamilySearch Center near you where you want films sent for viewing.
2 Select the Catalog tab on the FamilySearch.org home page. The catalog lists the FHL's holdings, which include county and church records, family history books, unpublished research and more. You can request most microfilms, but unfiled books don't circulate—you have to go to Salt Lake City to view those.



3 Next, search the catalog. Search on a place name to find records and local histories, or on a surname to find family histories. The place can be a town, township, county, state or country, and you can enter one or more place levels. Enter just a state name, and you'll get a list of all the counties and towns for which the FHL has items. Enter a county name, and a list of all the places within the county pops up.



Select a place from the list and click the Search button.

4 The next screen shows all the subject terms for the place you selected. For example, if you choose a county and the FHL has land records and probate records, those subjects appear, along with the number of items under that heading. Click on a subject term to view a list of available items.

5 Click on a title for more information. In the case of county records, the description usually tells you what records are on each roll of microfilm and the years they cover. Some records are online and unavailable on microfilm—in that case, the catalog description links to the page on FamilySearch.org where you can view them for free.

6 Choose the film number for the records and time period you're researching. With land and probate records—two of the most useful county

records—you'll usually start by ordering the index films. Land records typically have separate grantor (seller) and grantee (buyer) indexes. After you've found a name in the indexes, go back to the catalog to order the film with the records for the volume you need.

7 Verify that the website shows the FamilySearch Center near you where you want the film delivered. A short-term microfilm loan costs \$7.50 and gives you at least 60 days to view the film on site at the FamilySearch Center. With the extended loan option, which costs \$18.75, the film stays at the center indefinitely.

Some items are available on microfiche, rather than microfilm. A microfiche loan costs \$4.75 and the microfiche stays at the FamilySearch Center indefinitely. After selecting a loan option, click Add to Cart.

8 When you've selected all the films you want to request, click

Proceed to Checkout. Then verify your billing address, pay by either credit card or PayPal, and review your order. You'll receive an e-mail confirmation. You have 24 hours to cancel the order if you made a mistake or no longer need the film. You can log in to your FamilySearch account at any time to check the status of your order.

A few weeks after placing your order, you'll be notified by e-mail when your film arrives at the FamilySearch Center. You must use films on site—they can't be removed from the center. When viewing your film, keep in mind that some contain multiple items. If the catalog indicated an item number, you might need to scroll through the film to find the record collection you need.

You'll receive a renewal notification by e-mail a week before the film needs to be returned. You can either renew the film or have it returned.

» Rick Crume



RESOURCE ROUNDUP

Add-Ons for Your FamilySearch Family Tree

THE FREE FAMILYSEARCH Family Tree <www.familysearch.org/tree> sets itself apart from other online family tree collections in a couple of ways: First, it maintains a single record for each person, avoiding the massive duplication in most other family tree databases. Second, a growing list of third-party add-ons expands Family Tree's functionality. Listed at <www.familysearch.org/products>, they include general-purpose genealogy software that can share data with Family Tree, such as Ancestral Quest, Legacy Family Tree and RootsMagic (for Windows), and MacFamilyTree (for Mac OS X).

This overview describes other FamilySearch Family Tree add-ons (free unless indicated otherwise), ranging from research tools to shortcuts for sharing family history. My favorites are the tools for creating charts, which can make excellent gifts

or help with your research, but you might find something else useful to help with researching, writing and sharing your family history.

CHARTS, PHOTOS AND MAPS CHARTING COMPANION FOR FAMILY-SEARCH <www.progenygenealogy.com>

Charting Companion for Windows creates colorful ancestor and descendant charts and reports with data pulled from your FamilySearch Family Tree. You can specify how many generations to include and add selected events and photos. Save your chart as a file for online sharing and printing. After the free trial, the program costs \$29.95.

FAMILY CHARTMASTERS <familychartmasters.com>

Drawing on your FamilySearch Family Tree or your genealogy data and photos, Family ChartMasters creates

large family tree charts for reunions, gifts or research reference. Choose from the ancestor and descendant chart designs, then customize your chart with photos or graphics. For a fee, you can have the chart printed on parchment paper, vinyl, canvas or other material.

FAMILY PHOTOLOOM <www.photoloom.com/nfs.html>

An online app, Family Photoloom lets you organize your digital photos into albums, tag them by name and add descriptions. You can import information from your FamilySearch Family Tree, link your pictures back to it, and invite people to view your photo albums. Family Photoloom is free for up to 200 images with 1 GB of storage and up to 10 guest viewers. For \$39 a year, there are no limits on uploads or invited guests.

LEAF <leaf.byu.edu>

Created by the BYU Open Source Lab, this app creates colorful charts showing several generations of a person's ancestors so you can easily spot where you're missing information.

ROOTSMAPPER

<rootsmapper.com>

RootsMapper plots your ancestors' places of birth on a map using data from your FamilySearch Family Tree. You can display up to eight generations of ancestors and visualize their migration patterns. The root person can't be living, so look up a deceased person's ID in FamilySearch Family Tree before you begin.

TENGENCHART

<www.tengenchart.com>

Using data either from FamilySearch Family Tree or a GEDCOM file, you can create a 10-generation circular pedigree chart showing each person's name and years of birth and death. Save the chart as a PDF file in one of three sizes from letter to 36x36 inches.

TREESEEK (CREATEFAN)

<www.treeseek.com>

CreateFan makes several kinds of family tree charts, including four-generation pedigree and photo charts, a five-generation family photo chart and nine-generation fan and pedigree charts. The colored nine-generation fan chart is attractive and shows just names. Download a chart as a PDF or order a print for a fee.

RESEARCH

BROWSEHERO AND FAMILYHERO

<www.muddyheroes.com>

These two programs work with Family Tree (or genealogy software such as Legacy Family Tree or RootsMagic) to point out errors, duplicate individuals and missing information in your family tree. At \$24.95 a year for one program, or \$39.95 a year for both, you might expect them to do more.

FIND-A-RECORD <www.findarecord.com>

This tool helps identify gaps and potential problems in your family tree so you can see where you need to do more research. It links to record collections on free and subscription sites that might have the information you need. Click to search the site using information in your FamilySearch Family Tree (subscription fees may apply).

MAGICENSUS DELUXE AND MAGITREE

<themagikey.com>

MagiCensus Deluxe helps you extract data from US, Canadian, Irish, Scottish and British census records. From there, you can easily view a family across multiple census years and add it to your FamilySearch Family Tree. MagiTree, a free app, also analyzes census data. These Windows programs have a few more features, but MagiCensus Deluxe's \$49.99 price tag seems high.

PUZZILLA <puzzilla.org>

Select a person in the FamilySearch Family Tree and this app will give you an aerial view of his or her descendants. A dot represents each person; click on it for more information. Puzzilla helps you quickly identify branches of your family tree where you need to track down more descendants.

RECORDSEEK

<recordseek.com>

RecordSeek makes it easy to cite a website as a source in your FamilySearch Family Tree. Once you've installed the browser add-on, just click on Tree Connect in your bookmarks toolbar to create a citation to the site you're on and attach it to a person in Family Tree.

WRITING AND SHARING FAMILY HISTORY

AGES-ONLINE <www.ages-online.com>

After adding your family history and optionally importing information from FamilySearch Family Tree, you can collaborate with others to create a family website with stories. The Economy

plan (\$39.95 a year) is limited to one photo per person. The Standard plan (\$59.95 a year) supports multiple photos per person.

FILEGROVE <filegrove.com>

FileGrove lets you post digitized documents, photos and other items on its website. After uploading a file to FileGrove, you can tag it with names, places and keywords, and send it directly to your FamilySearch Source Box. Other researchers can search on those tags, view matching records and contact submitters. Free accounts are limited to 100 uploads, and all records must be made public. With a paid account, starting at \$5.95 a month, you can upload multiple files at once, make them private and let others download your files.

ILIVED <ilived.com>

iLived lets you upload family photos and stories to your FamilySearch tree, allowing you to provide context to your ancestors' entries. In addition to simply adding photos to your tree, by uploading them to the iLived site you can directly share them with relatives. As an added plus, the iLived mobile app allows you to upload photos directly from your mobile device.

LEGACY STORIES

<legacystories.org>

This site lets you bring your ancestors to life with photos, stories and oral histories. Record a narrative about family photos using your computer microphone. Link these talking slideshows, along with other audio and multimedia, to ancestors in your FamilySearch Family Tree. Similar to Facebook, Legacy Stories offers social networking features, so you can share your multimedia family history. The basic service is free. The pay version, starting at \$5.95 a month, lets you organize your stories in multiple journals for different topics, such as Childhood or Military Service.

» Rick Crume